

Table.1. Acute effect of bifenthrin on giant salamander larvae

BF concentration (µg/L)	average mortality				LC ₅₀ and 95% confidence interval (µg/L)				SC (µg/L)
	24h	48h	72h	96h	24 h	48 h	72 h	96 h	
6.25	0	0	33	33					
12.5	0	17	50	50	50	27.4	12.5	9.9	2.47
25	0	17	67	100	(31.3-79.9)	(18.2-42.7)	(7.6-20.9)	(6.8-14.4)	
50	50	100	100	100					

Table.2. Trends of different physiological parameters in brain, liver, and Kidney in response to concentration.

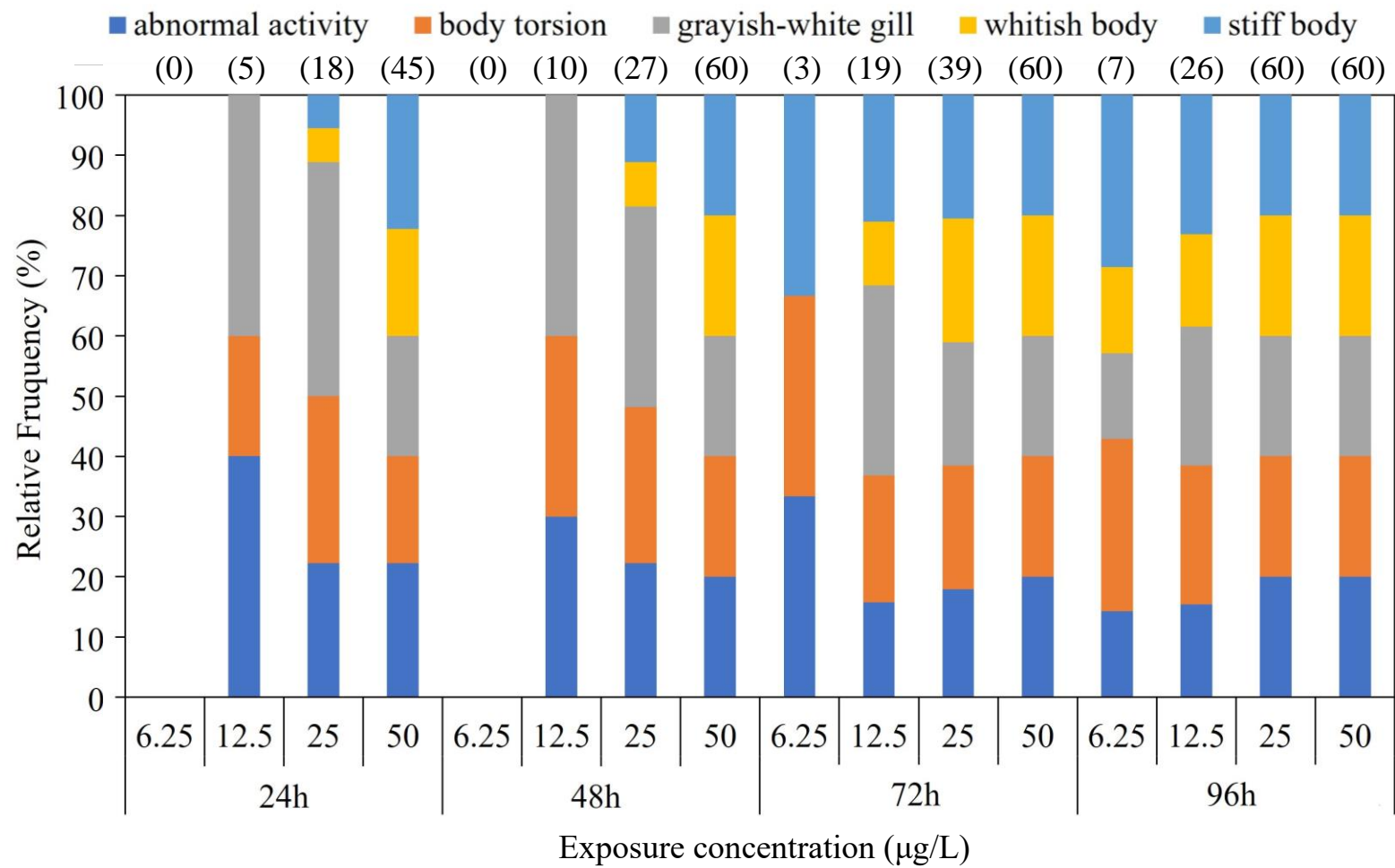
	Trendline formula	r ² value		Trendline formula	r ² value
ATP_B	$y = -0.0755x + 0.4131$	$R^2 = 0.931$	GSH_L	$y = -0.0209x + 0.0731$	$R^2 = 0.8685$
ATP_L	$y = -0.0106x + 0.0379$	$R^2 = 0.8799$	ROS_L	$y = 0.4x + 0.6271$	$R^2 = 0.995$
ATP_K	$y = -0.0829x + 0.5667$	$R^2 = 0.9573$	ROS_K	$y = 0.4864x + 0.468$	$R^2 = 0.9712$
SOD_K	$y = -0.0785x + 0.2643$	$R^2 = 0.8854$	ROS_B	$y = 0.5165x + 0.4052$	$R^2 = 0.9399$
SOD_L	$y = -0.0267x + 0.1047$	$R^2 = 0.8218$	CAT_L	$y = -0.0375x + 0.1615$	$R^2 = 0.9167$
SOD_B	$y = -0.0266x + 0.1724$	$R^2 = 0.9779$	CAT_B	$y = -0.0221x + 0.1306$	$R^2 = 0.9338$
MDA_K	$y = 0.004x + 0.0076$	$R^2 = 0.9905$	CAT_K	$y = -0.0279x + 0.1293$	$R^2 = 0.9673$
MDA_L	$y = 0.005x + 0.0059$	$R^2 = 0.9954$	8OHdG_L	$y = 0.4064x + 0.2127$	$R^2 = 0.9342$
MDA_B	$y = 0.0137x + 0.0246$	$R^2 = 0.9869$	8OHdG_K	$y = 0.4601x + 1.2092$	$R^2 = 0.9976$
GSH_K	$y = -0.0208x + 0.0718$	$R^2 = 0.9063$	8OHdG_B	$y = 0.6372x + 0.6869$	$R^2 = 0.9528$
GSH_B	$y = -0.0219x + 0.0746$	$R^2 = 0.9171$			

Table.3 Quality of sequencing sample

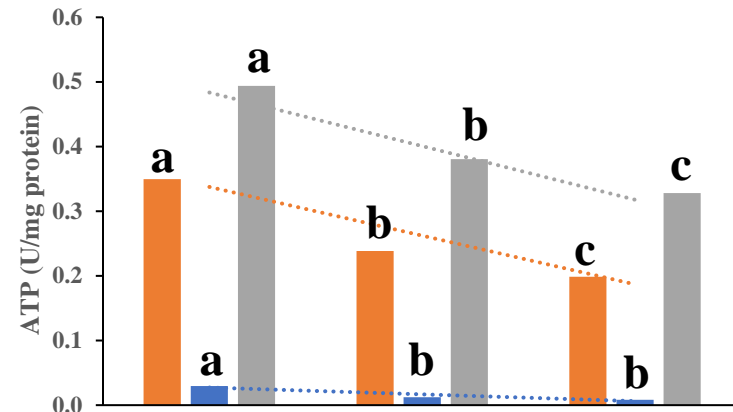
Sample	RawData(bp)	CleanData(bp)	BF_Q20(%)	BF_Q30(%)	BF_N(%)	BF_GC(%)
C1	8570323500	8497016973	8355229789 (97.49%)	7983356593 (93.15%)	10573 (0.00%)	4077935926 (47.58%)
C2	7961443200	7884980846	7793418743 (97.89%)	7492472384 (94.11%)	9793 (0.00%)	3840803534 (48.24%)
C3	6180859800	6105641190	6025557130 (97.49%)	5771472897 (93.38%)	118099 (0.00%)	3026098542 (48.96%)
L1	7345199100	7274677825	7145634845 (97.28%)	6803656228 (92.63%)	440332 (0.01%)	3484409085 (47.44%)
L2	8742854100	8652131352	8529881816 (97.56%)	8169319937 (93.44%)	10794 (0.00%)	4272687470 (48.87%)
L3	6757273800	6685690560	6590896525 (97.54%)	6309314726 (93.37%)	8150 (0.00%)	3268687270 (48.37%)
H1	6501689700	6423849792	6344224703 (97.58%)	6079349482 (93.50%)	6252 (0.00%)	3173485621 (48.81%)
H2	6997675200	6924181647	6848480651 (97.87%)	6587767854 (94.14%)	6671 (0.00%)	3363836583 (48.07%)
H3	6005677500	5932246189	5878549135 (97.88%)	5654044512 (94.14%)	5660 (0.00%)	2893276454 (48.18%)

Table.4 Gene annotation success rate statistics

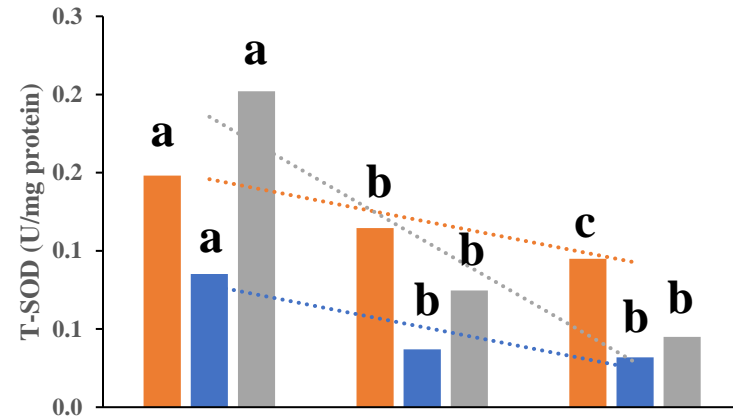
	Number of Unigenes	Percentage(%)
Nr	30931	35.17
KEGG	29913	34.01
KOG	15458	17.57
SwissProt	19999	22.74
annotation genes	31728	36.07
without annotation gene	56230	63.93
Total Unigenes	87958	100.00



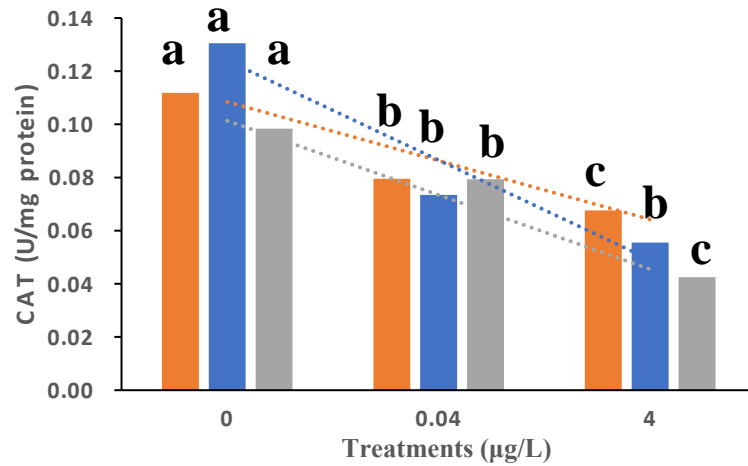
(A)



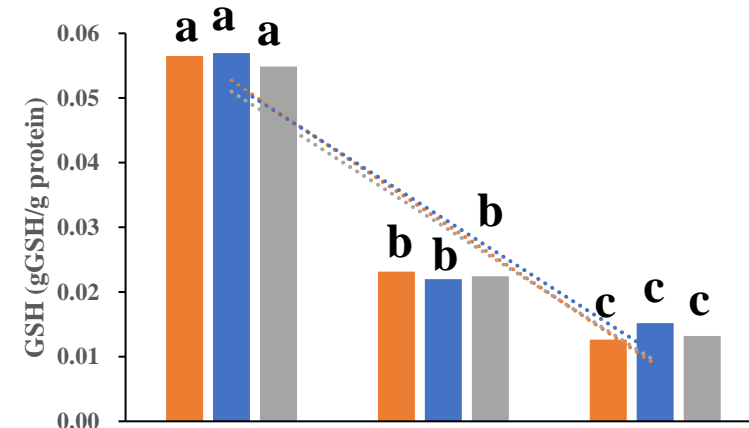
(B)



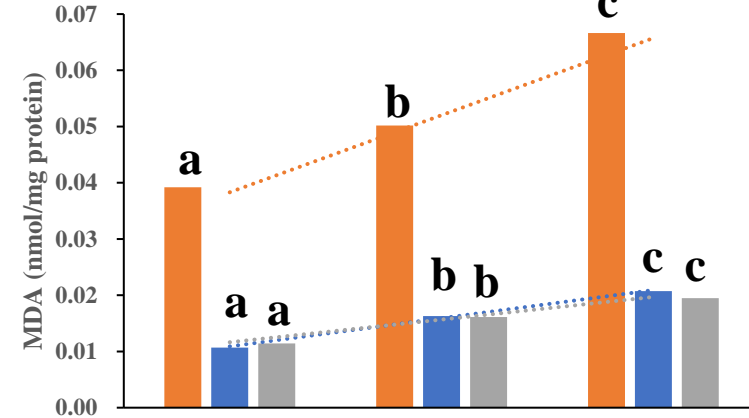
(C)



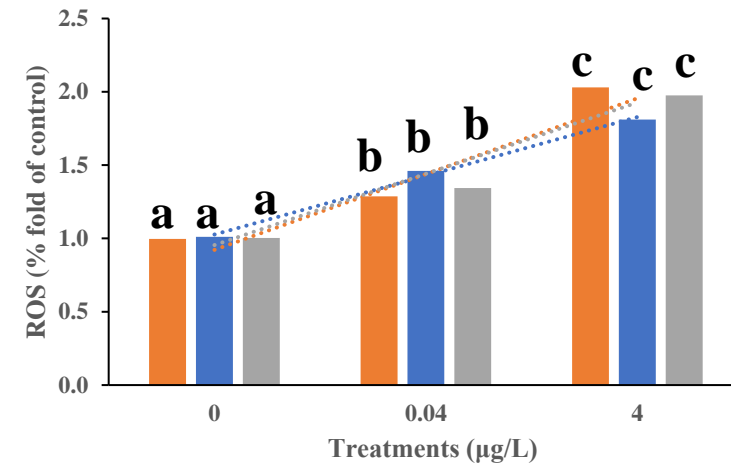
(D)

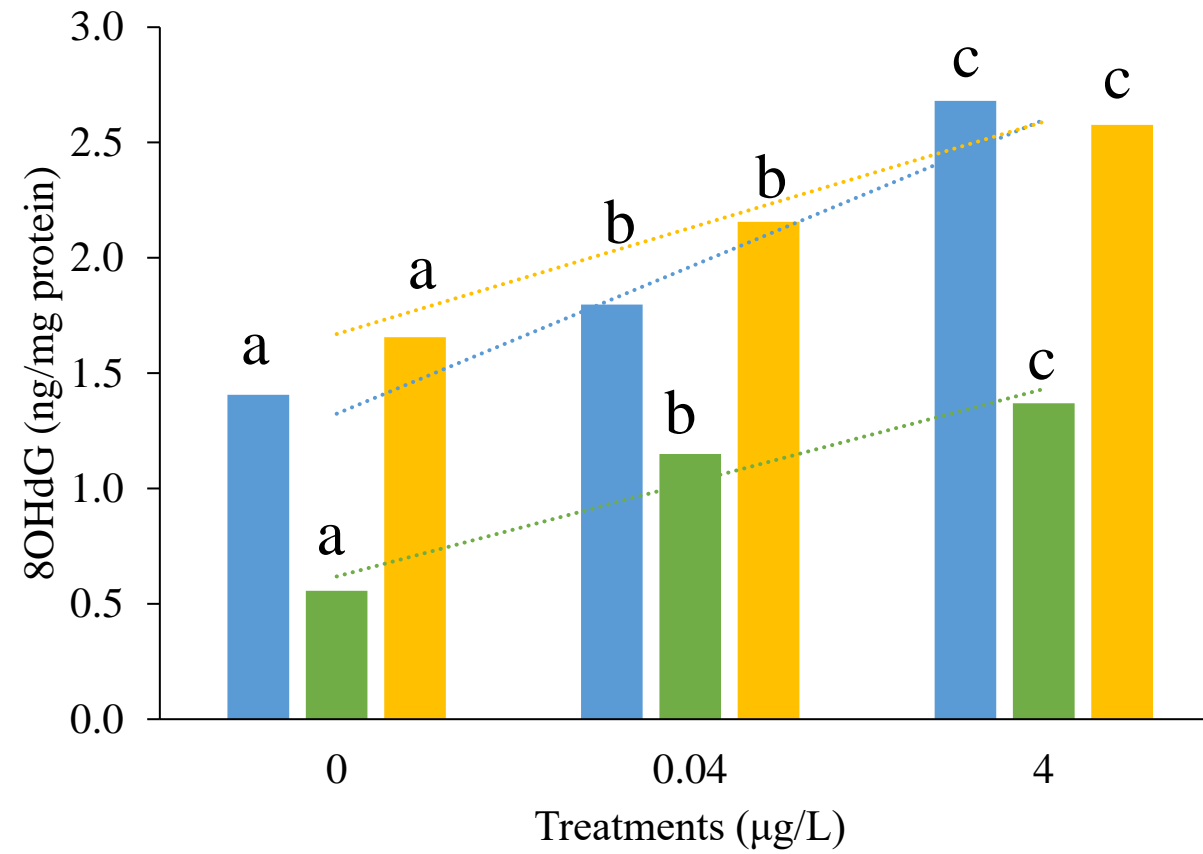


(E)

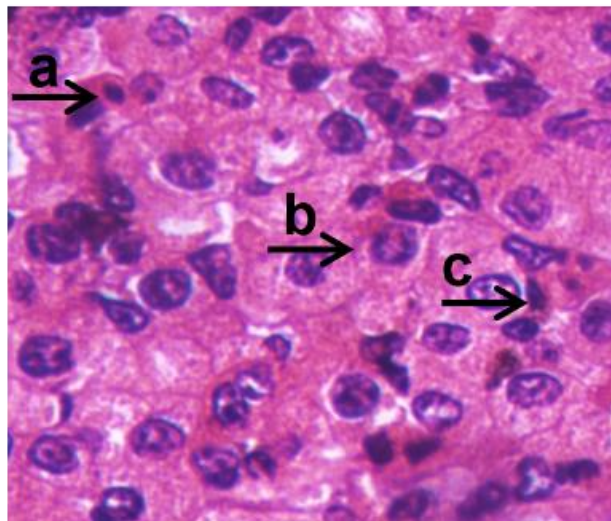


(F)

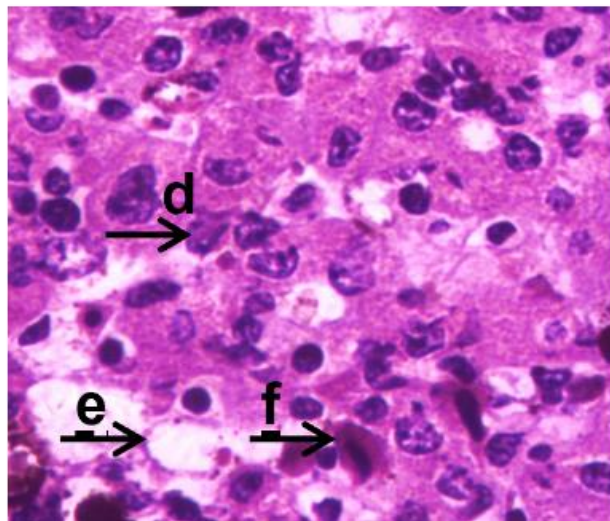




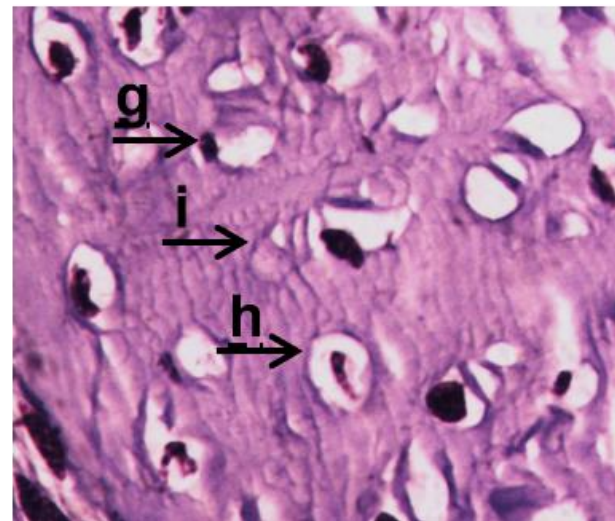
(A)



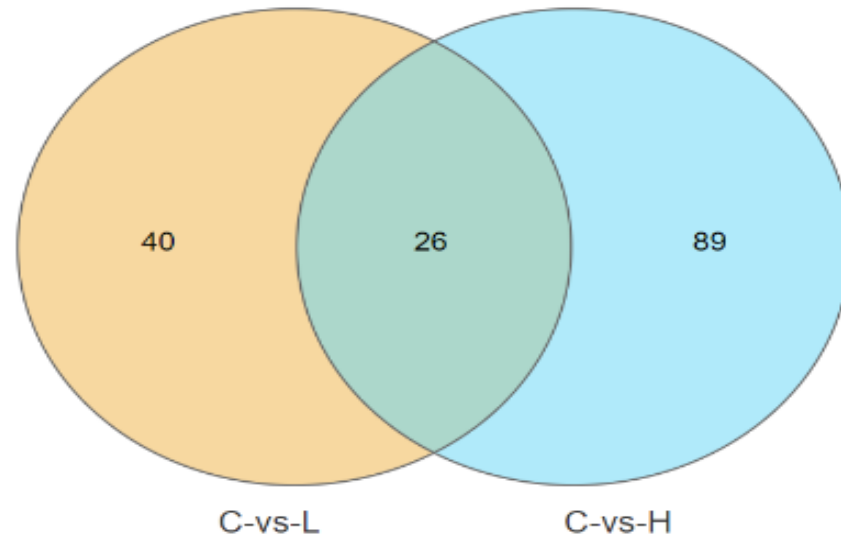
(B)



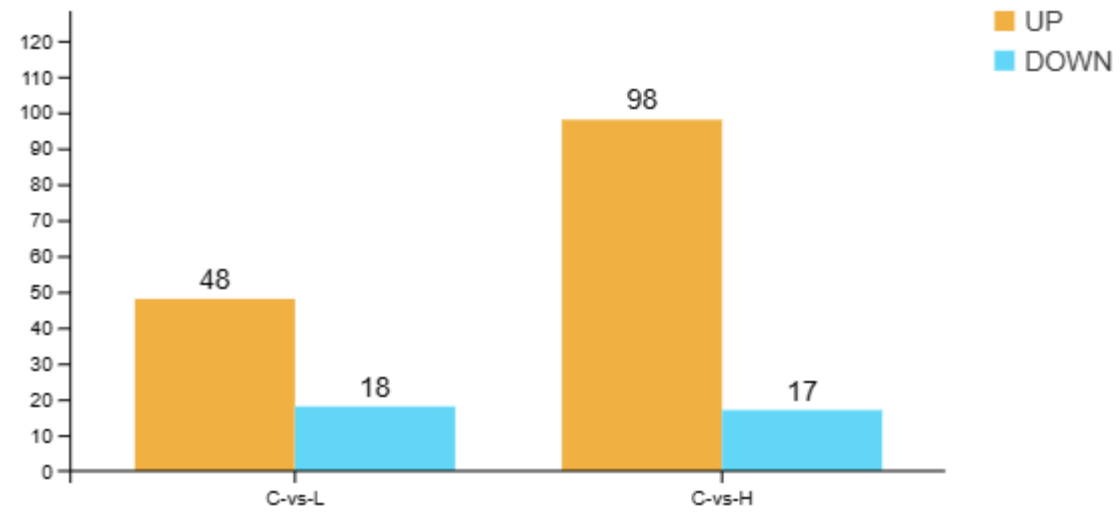
(C)

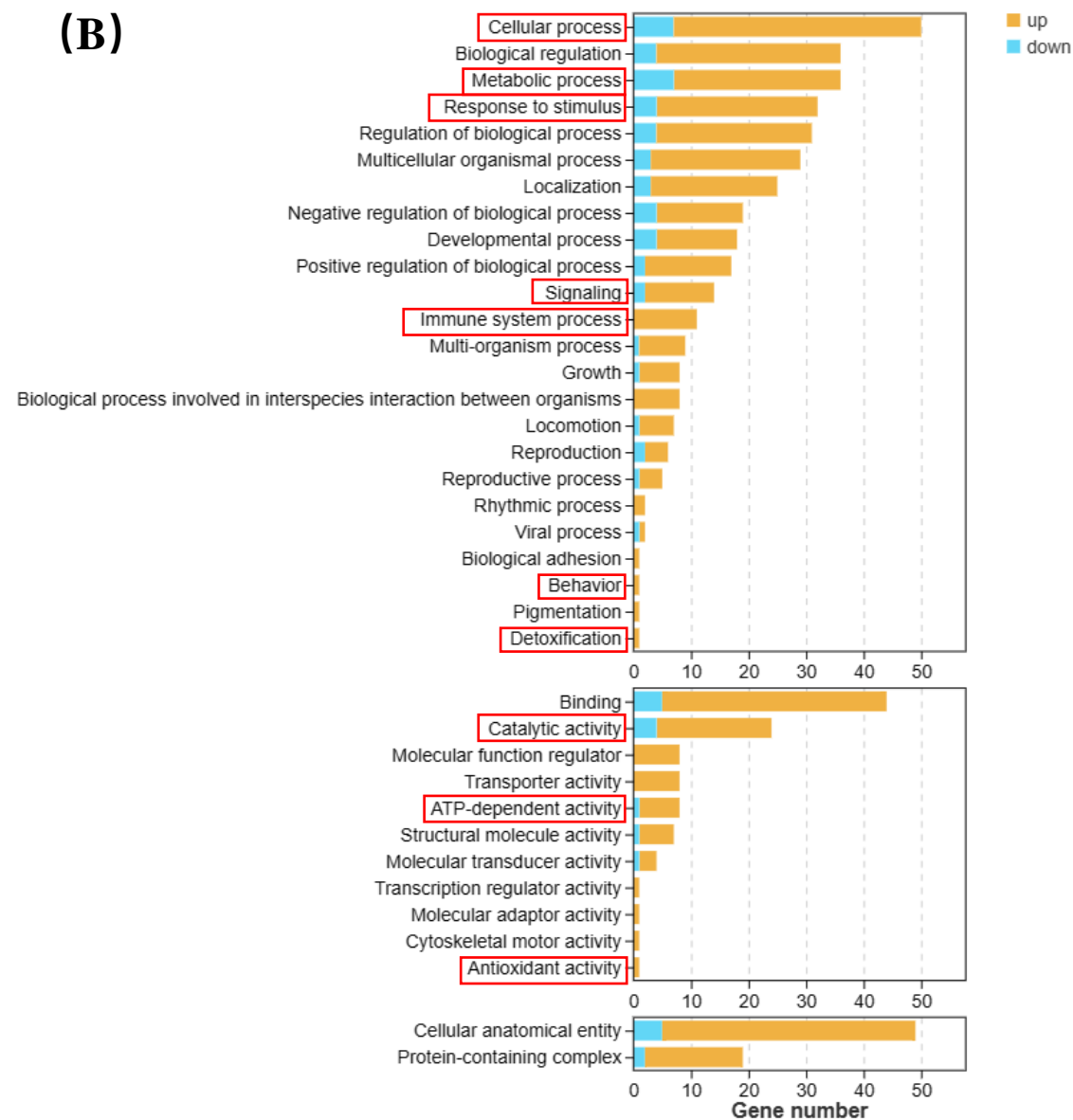
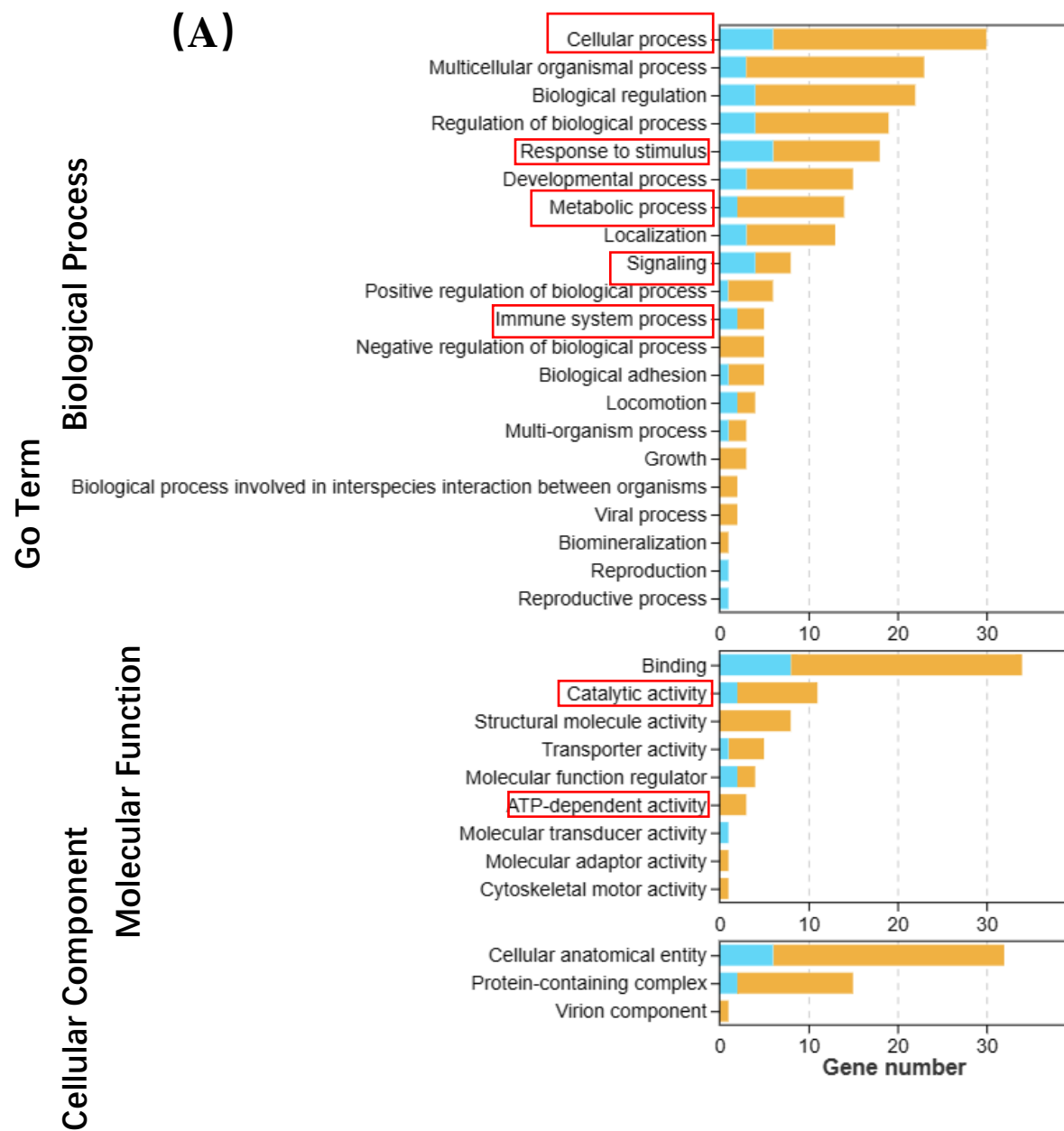


(A)

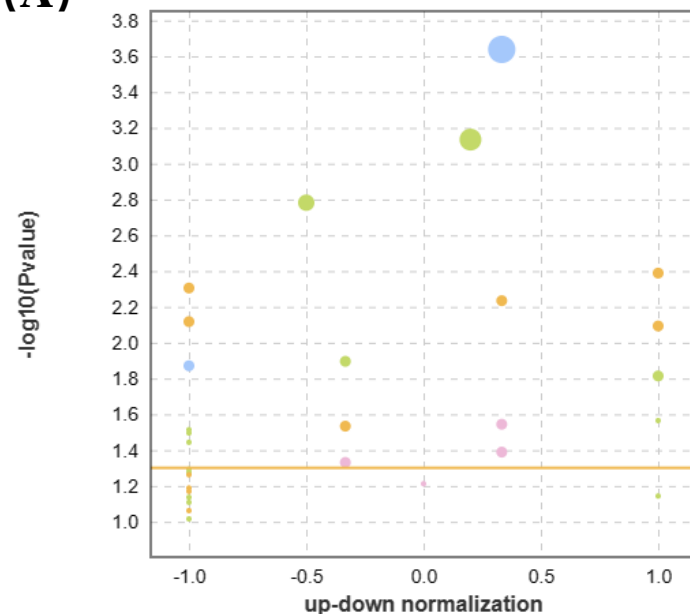


(B)





(A)



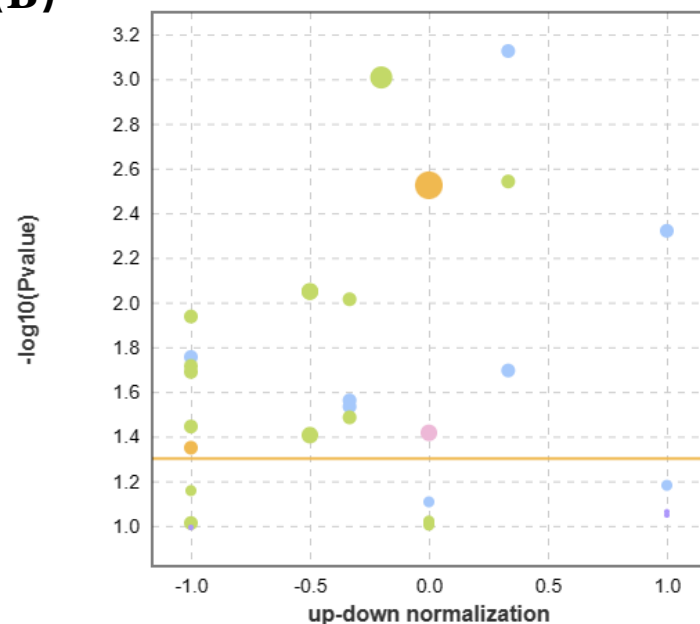
Category: ● Environmental Information Processing ● Human Diseases ● Organismal Systems ● Cellular Processes

pathway top20

ID	Description	Number
ko04020	Calcium signaling pathway	6
ko05414	Dilated cardiomyopathy	5
ko05323	Rheumatoid arthritis	4
ko04260	Cardiac muscle contraction	3
ko04672	Intestinal immune network for IgA production	3
ko04670	Leukocyte transendothelial migration	3
ko04662	B cell receptor signaling pathway	3
ko04261	Adrenergic signaling in cardiomyocytes	3
ko05150	Staphylococcus aureus infection	3
ko04064	NF-kappa B signaling pathway	3
ko05410	Hypertrophic cardiomyopathy	3
ko05412	Arrhythmogenic right ventricular cardiomyopathy	2
ko04810	Regulation of actin cytoskeleton	3
ko04613	Neutrophil extracellular trap formation	3
ko05143	African trypanosomiasis	2
ko05340	Primary immunodeficiency	2
ko05310	Asthma	2
ko04510	Focal adhesion	3
ko04145	Phagosome	3
ko05330	Allograft rejection	2



(B)



Category: ● Organismal Systems ● Human Diseases ● Environmental Information Processing ● Cellular Processes ● Metabolism

pathway top20

ID	Description	Number
ko04975	Fat digestion and absorption	3
ko05150	Staphylococcus aureus infection	5
ko05321	Inflammatory bowel disease	3
ko04020	Calcium signaling pathway	6
ko03320	PPAR signaling pathway	3
ko05323	Rheumatoid arthritis	4
ko05416	Viral myocarditis	4
ko05340	Primary immunodeficiency	3
ko05310	Asthma	3
ko04672	Intestinal immune network for IgA production	3
ko05330	Allograft rejection	3
ko04612	Antigen processing and presentation	3
ko05320	Autoimmune thyroid disease	3
ko04650	Natural killer cell mediated cytotoxicity	3
ko04640	Hematopoietic cell lineage	3
ko05140	Leishmaniasis	3
ko05322	Systemic lupus erythematosus	3
ko04145	Phagosome	4
ko05169	Epstein-Barr virus infection	4
ko04064	NF-kappa B signaling pathway	3

